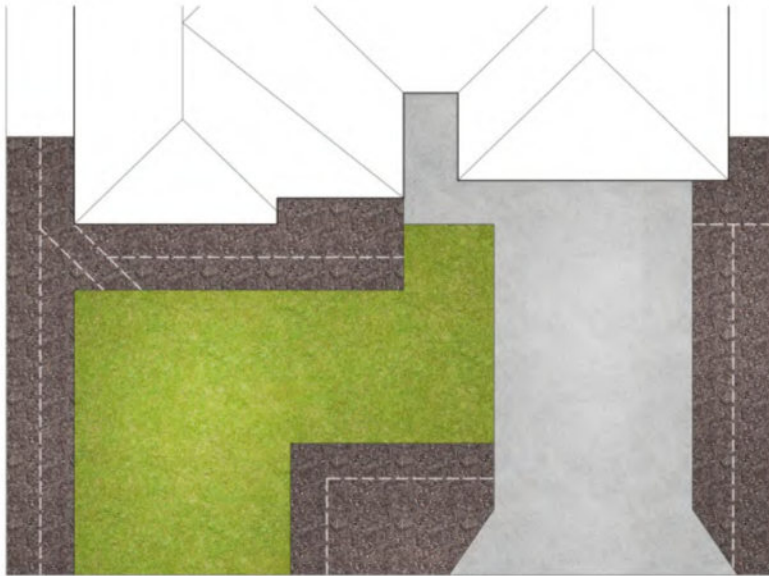
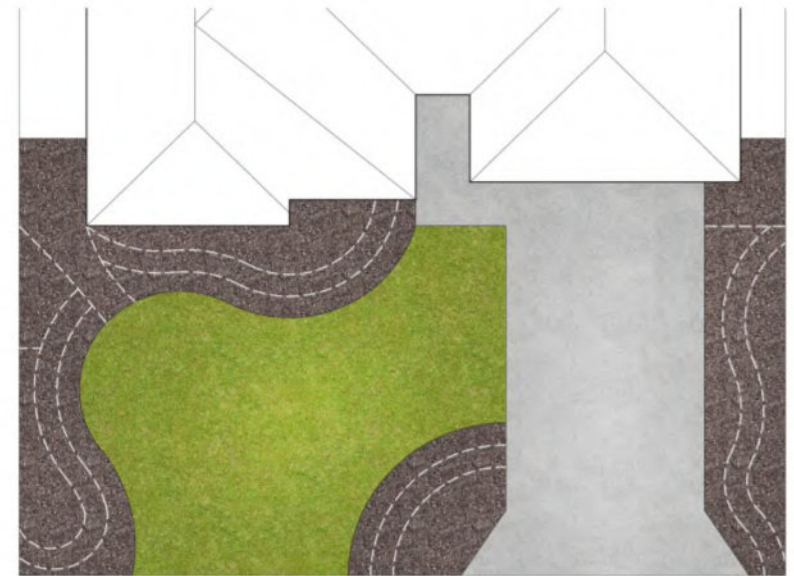


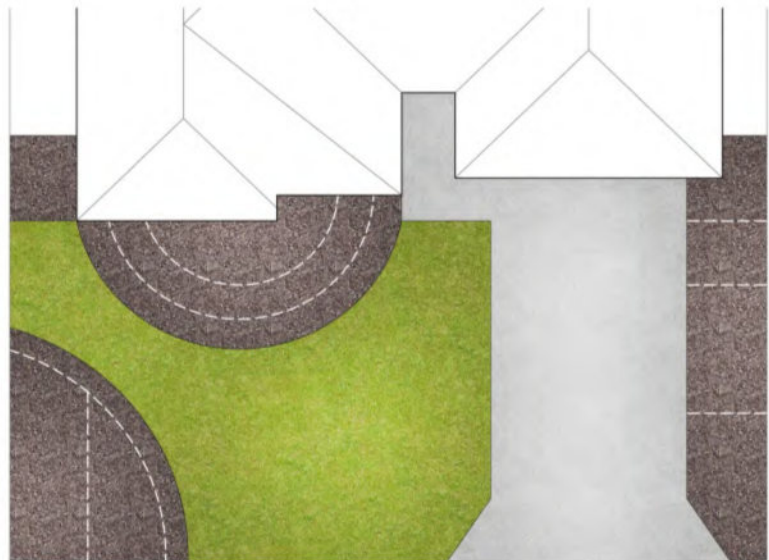
'FORMAL'



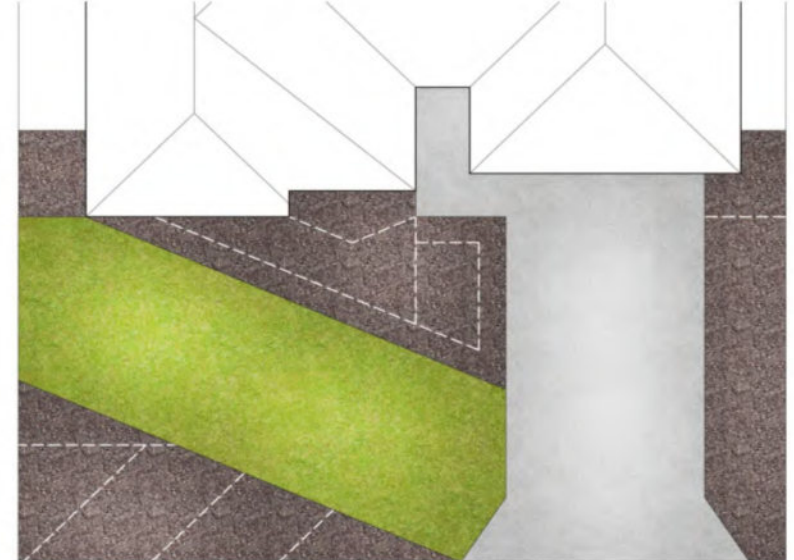
'CURVES'



'HERITAGE'

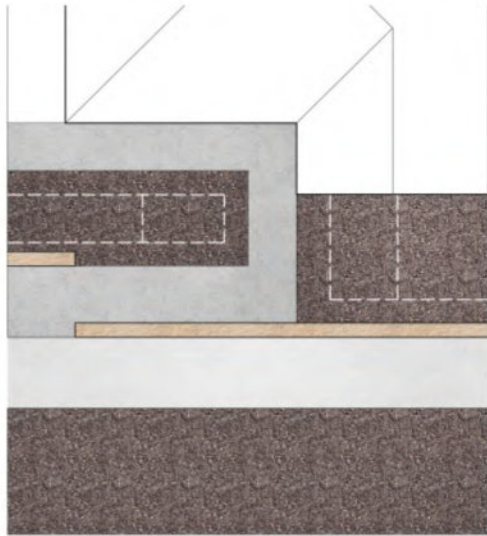


'CONTEMPORARY'

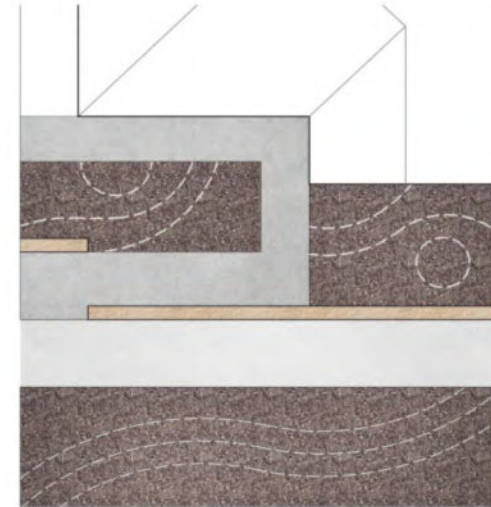


TRADITIONAL LAYOUTS

STEP 1: Choose your preferred layout of turf and garden that suits your front yard and verge.
STEP 2: Choose your preferred planting palette.



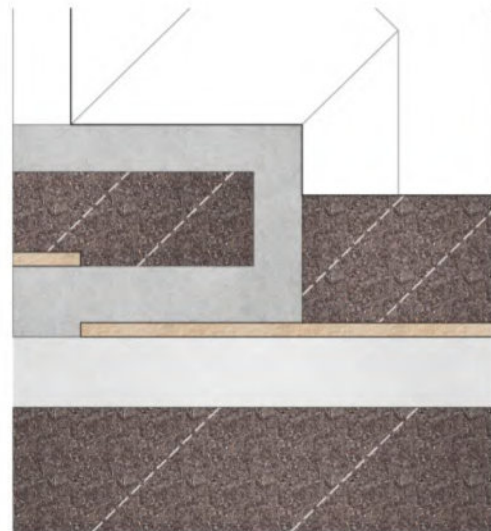
'FORMAL'



'CURVES'



'HERITAGE'



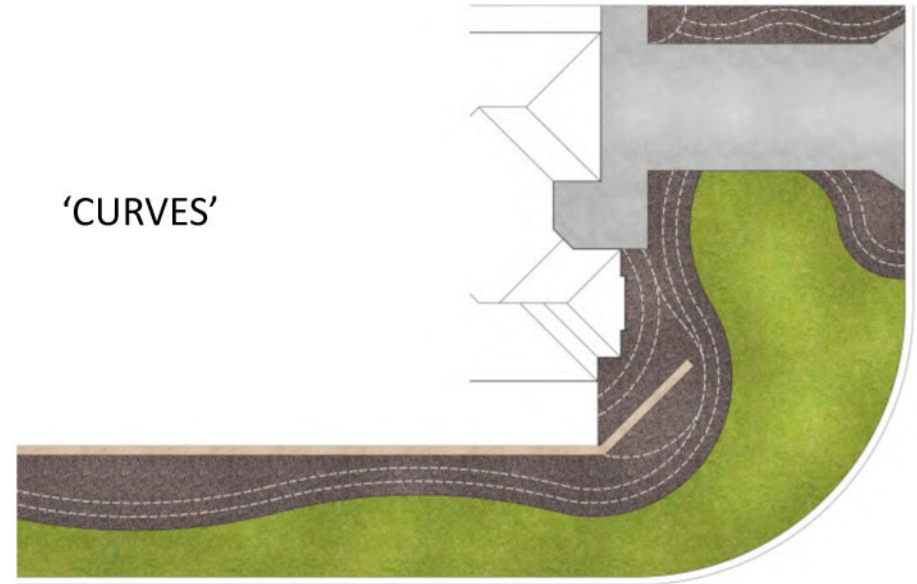
'CONTEMPORARY'

REAR-LOADED LAYOUTS

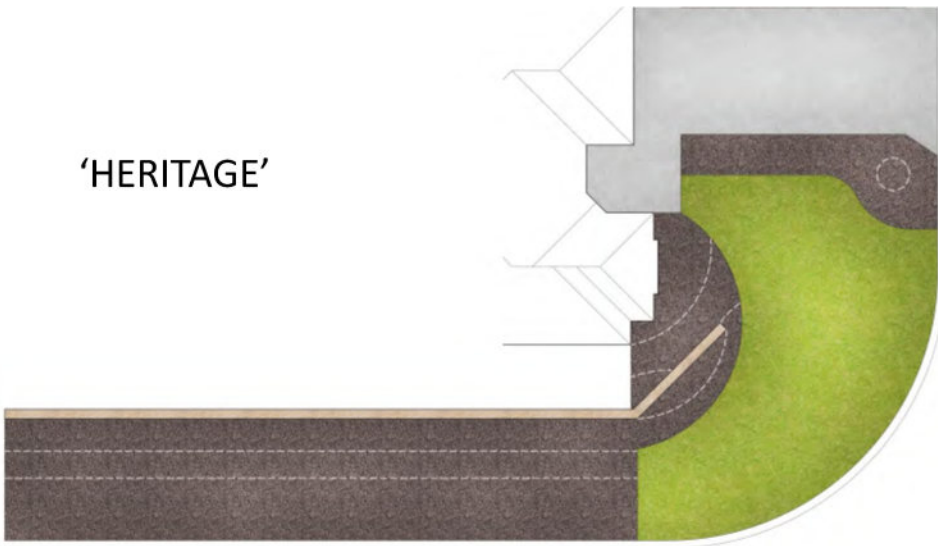
‘FORMAL’



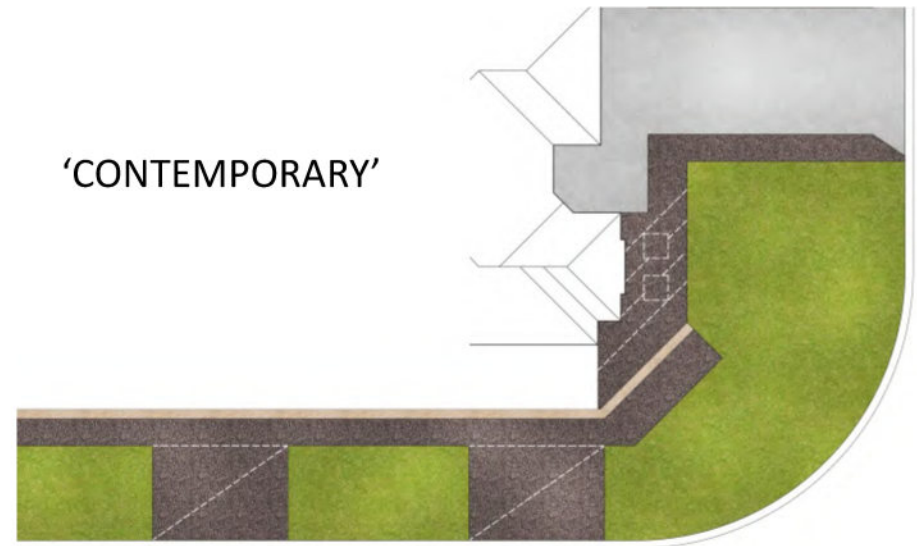
‘CURVES’



‘HERITAGE’



‘CONTEMPORARY’

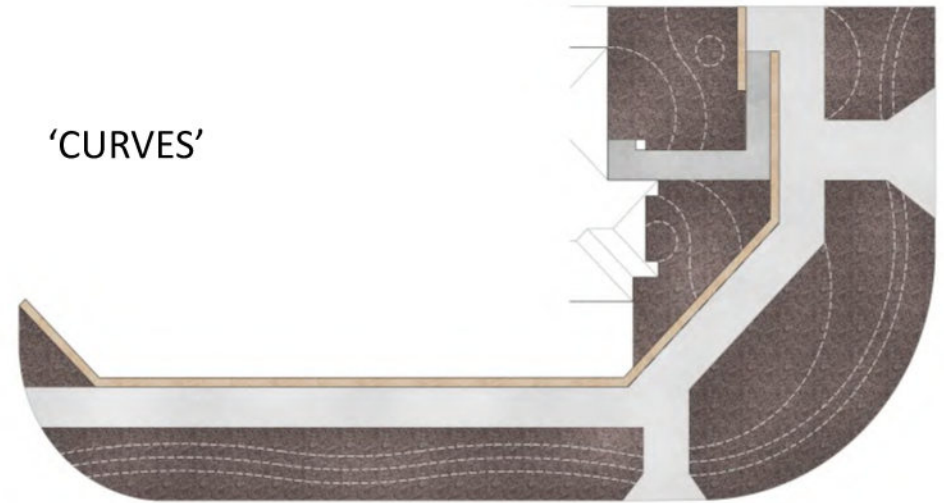


CORNER LAYOUTS

‘FORMAL’



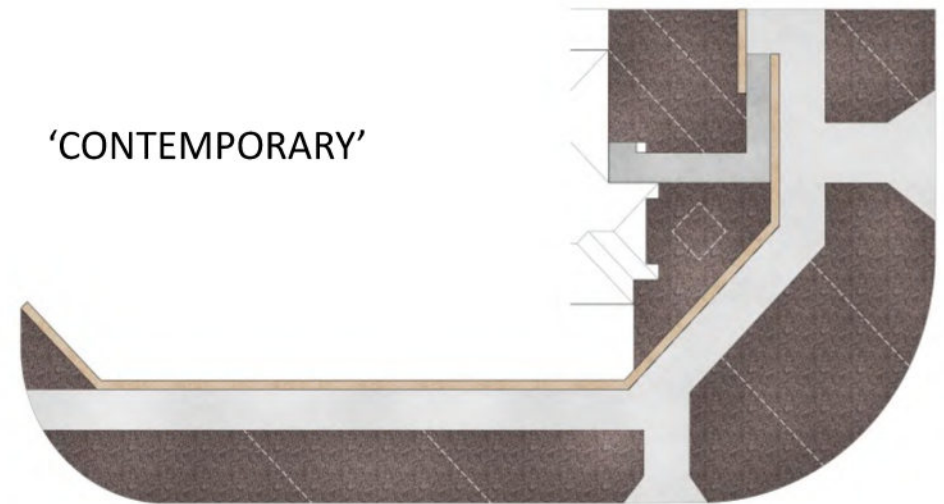
‘CURVES’



‘HERITAGE’



‘CONTEMPORARY’



REAR-LOADED CORNER LAYOUTS

In-Vogue



Alternanthera 'Little Ruby'



Cordyline



Coprosma



Anigozanthos 'Kangaroo Paw'



Dianella



Syzygium



Features

- With lush foliage and flowering shrubs this is still an easy care option.
- Layered planting with a variety of textures and tones gives this palette a vibrant appearance.
- This palette would look great with a contemporary styled home.



Watering and Maintenance requirements, less icons means less water and work!

All plants are subject to stock availability.

The Outback



Eremophila 'Nivea'



Callistemon



Convolvulus



Anigozanthos 'Kangaroo Paw'



Adenanthos 'Woolly Bush'



Hibbertia 'Snake Vine'



Features

- Plants selected to replicate the natural Australian environment.
- One of our highest rated waterwise palettes.
- Shrubs and ground covers are hardy and will do well in our WA gardens.
- Best suited to informal planting.



Watering and Maintenance requirements, less icons means less water and work!

All plants are subject to stock availability.

The Grasslands



Dietes



Cordyline



Lomandra



Agapanthus



Dianella



Phormium



Features

- Create a stunning accent to your modern styled home.
- Striking palette of strappy vibrant plants.
- Easy care, low maintenance garden that looks good all year round.
- This palette suits all garden layouts.



Watering and Maintenance requirements, less icons means less water and work!

All plants are subject to stock availability.

By The Beach



Eremophila 'Nivea'



Viburnum



Lomandra



Westringia



Grevillea



Tulbaghia 'Society Garlic'



Features

- A representation of naturally occurring flora when the ocean and wind meet the sand.
- The plants selected are suitable to coastal conditions with low maintenance and drought tolerant features.
- This coastal palette provides a relaxed and informal theme that suits our curve & contemporary layouts.



Watering and Maintenance requirements, less icons means less water and work!

All plants are subject to stock availability.

The Classic



Rosemary / Lavender



Viburnum



Liriope



Agapanthus



Trachelospermum 'Star Jasmine'

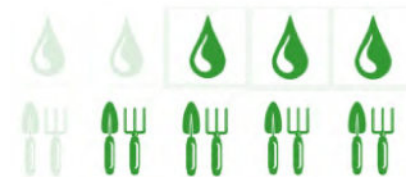


Scaevola



Features

- Bring colour to your home with a combination of lush foliage and flowering shrubs.
- With beautiful flowers and fragrant scents this garden will be the perfect welcome home all year round.
- These traditional plants look great planted at random or formally, the choice is yours.



Watering and Maintenance requirements, less icons means less water and work!

All plants are subject to stock availability.

Go Green



Carpobrotus 'Pigface'



Gazania



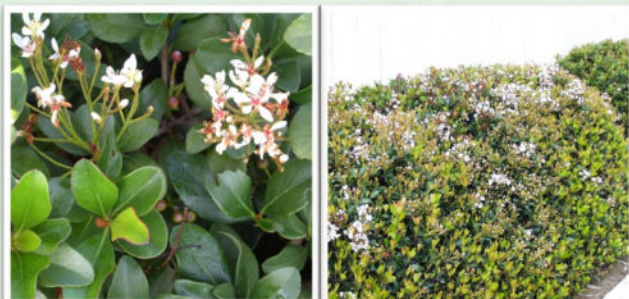
Pittosporum 'Miss Muffet'



Leucophyta



Raphiolepis Indica



Syzygium



Features

- Our highest rated waterwise palette, With a variety of different plants including succulents which will thrive with little water.
- Do your bit for the environment while saving money on the water bills.
- These plants only need a little maintenance to keep your garden looking good all year round.



Watering and Maintenance requirements, less icons means less water and work!

All plants are subject to stock availability.